

WINDOW + DOOR
REPLACEMENT
SOLUTIONS

PRODUCTS +
OPTIONS



EVERY PRODUCT EVERY POSSIBILITY

Between our Ultimate, Elevate, and Essential product lines, you'll find everything you need to complete your replacement project with Marvin.

INTRODUCTION

THE MARVIN PORTFOLIO	4
QUALITY	6
WINDOW + DOOR TERMS	8

ULTIMATE 17

WINDOWS	18
DOORS	34
OPTIONS	43

ULTREX® FIBERGLASS 64

ELEVATE 67

WINDOWS	68
DOORS	78

ESSENTIAL 85

WINDOWS + DOORS	86
-----------------	----

ELEVATE + ESSENTIAL OPTIONS 97

INTERIORS + EXTERIORS	98
HARDWARE STYLES + FINISHES	102
ADDITIONAL OPTIONS	104

GLOSSARY 108

THE MARVIN PORTFOLIO

The Marvin portfolio is organized into three product collections, each defined by degree of design detail, flexibility, and customization opportunities.

Curated solutions provide exceptional performance, energy efficiency, low maintenance, and long-lasting quality you can see, feel, and touch.



SIZING

Custom-sized windows and doors built to your home's exact specifications

DESIGN FLEXIBILITY

The highest level of design flexibility with the most extensive offering of options

Wide range of design options with prompt delivery for quicker-turn projects

Tailored set of design options with accelerated delivery

INTERIORS

Wood interiors with six species options. Factory finish in White or Designer Black paint, six stains, clear coat, or primed for custom painting

Wood interiors. Factory paint in White or Designer Black, bare wood for painting or staining, or clear coat

Low-maintenance fiberglass interiors in White, Ebony, Gunmetal or Bronze

EXTERIORS

Long-lasting, low-maintenance exteriors with best-in-class finishes for superior durability
Extruded Aluminum (19 colors or custom color) or Wood exteriors (four species)

Long-lasting, low-maintenance exteriors with best-in-class finishes for superior durability
Extra durable Ultrex® fiberglass exteriors in six color options

Long-lasting, low-maintenance exteriors with best-in-class finishes for superior durability
Extra durable Ultrex® fiberglass exteriors in six color options

HARDWARE

Extensive selection of window and door hardware including Gallery Hardware

Available in 6 finish options with 2 door handle styles

Available in 6 finish options with 1 door handle style

SCREENS

Stained/painted wood or color matched aluminum surrounds

Stainable interior wood or color matched surrounds

Color matched surrounds

+ OPTIONS

Concealed sensors for security systems, Wash Mode

COASTAL + WATERFRONT

All Marvin windows and doors are well suited for coastal or waterfront areas, with special products and hardware specifically designed for hurricane zones

QUALITY IS STANDARD

DISCERNING STANDARDS FOR MATERIAL SELECTION

...
Our commitment to quality starts with discerning standards for material selection. We source only the highest quality and most durable materials for our window and door products.

INDUSTRY-LEADING FINISH

...
Marvin's exterior finishes are best in class – no competitor has achieved a higher finish verification.

DURABLE, HIGH-PERFORMING PRODUCTS

...
Our team of experts continues to push boundaries – designing, testing, and refining products to ensure durability and long-term performance.

AWARD-WINNING PRODUCTS

...
Builders and industry professionals have repeatedly recognized Marvin as Best in Quality in the BUILDER Magazine Brand Use Study.

COMPREHENSIVE WARRANTY

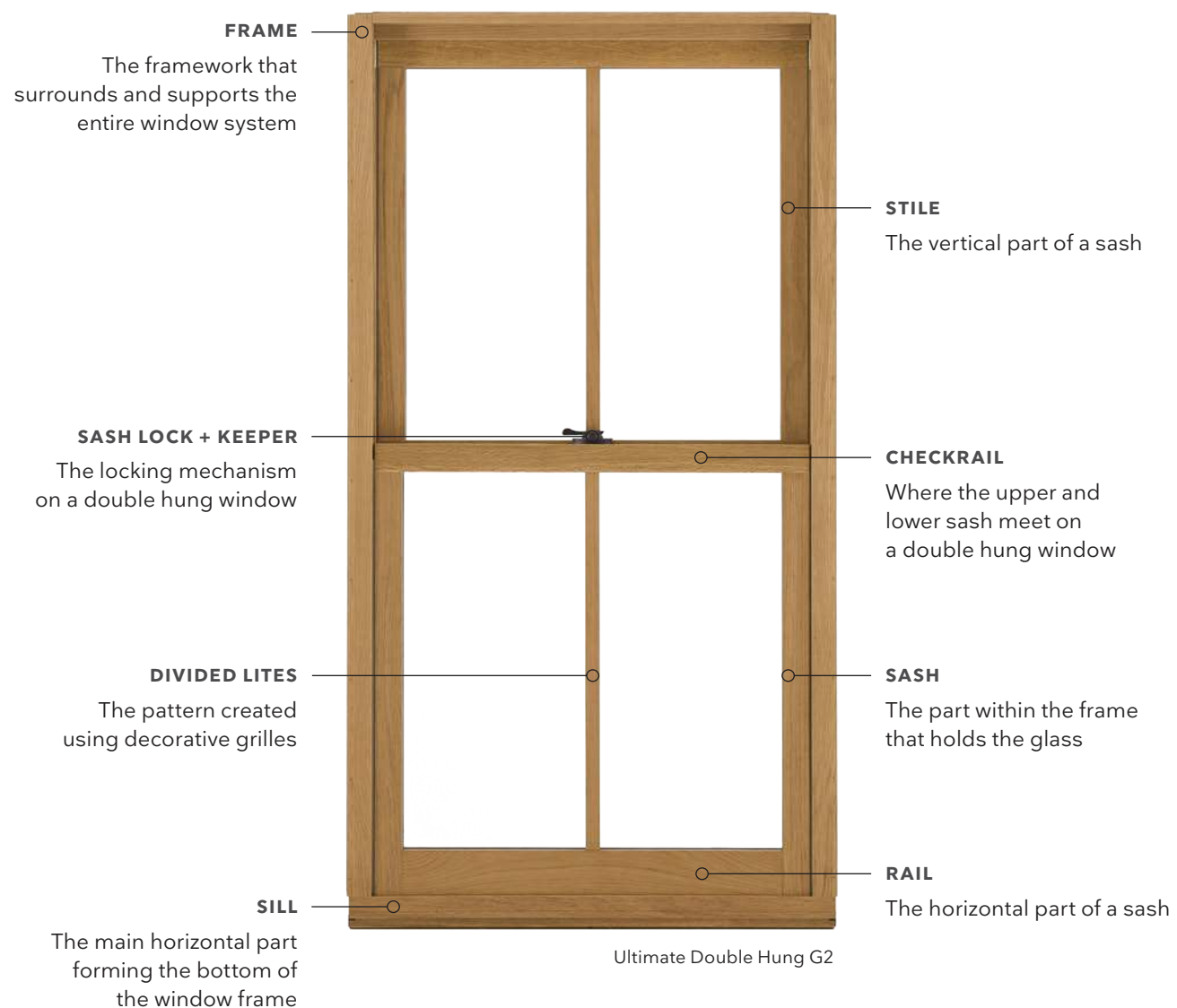
...
Our comprehensive warranty provides peace of mind so you can enjoy your windows and doors for years to come.



Elevate Double Hung windows in Ebony

COMMON WINDOW + DOOR TERMS

WINDOWS



DOORS



WINDOW TYPES



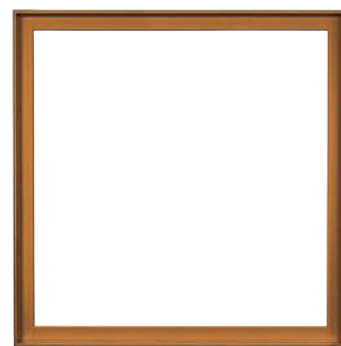
DOUBLE HUNG

Both the top and bottom sash move for multiple venting options and tilt in for easy cleaning. Also available as a single hung where the top sash is stationary.



CASEMENT

Hinged on either side to open like a door. Choose a crank out or push out.



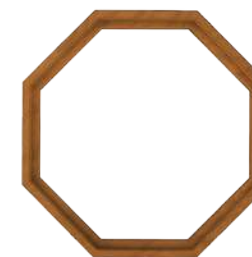
PICTURE

Large window that doesn't open, frequently chosen to complement windows that do open. Venting options are available.



ROUND TOP

Choose a rounded or arched top on stationary windows, double hungs, or casements for a stylish twist.



SPECIALTY SHAPE

Fully customized to fit a unique opening or style. Some styles open, but shaped windows are often stationary.



AWNING

Hinged on the top of the frame and swings outward from the bottom.



GLIDER

Has a sash that glides to the left or right. It can also feature a large center picture window with two side windows that open, or two center windows that slide apart to create a pass-through.



BOW OR BAY

A series of windows joined together in a curve or defined angle. Bow windows create a more gradual arc with more than three windows. A bay window typically features three windows and has a head and seat board.

DOOR TYPES



Ultimate Inswing French door



Ultimate Sliding French door

SLIDING DOORS

One or more opening panels glide effortlessly on a track. Available in combinations with up to four panels.



Ultimate Inswing door

SWINGING DOORS

One or two door panels open, swinging in or out. Available in single panel or combinations with up to four panels.



Ultimate Bi-Fold door

SCENIC

Expansive sizes with large panes of glass for seamless indoor/outdoor living and uninterrupted views. Choose from Lift and Slide, Multi-Slide, and Bi-Fold variations.

FRENCH DOORS

When you picture a French door you might imagine a European-style double door that swings open to reveal a beautiful garden or patio. While that might be true, French doors don't always swing open. Some are sliding French doors. When it comes to exterior doors, the difference between a French door and a patio door isn't in the way it operates – it's actually in the width of the stiles and rails on the door panel itself. The vertical stiles on a French door will be wider, and the rails at the top and bottom are taller, giving a more traditional appearance. Patio doors have slimmer profiles with more glass area and a more contemporary look, and they can swing or slide open just like a French door.

INSERT VS. FULL-FRAME REPLACEMENT



WHAT TYPE OF WINDOW REPLACEMENT DO I NEED?

Insert replacements allow new windows to be installed within the existing frame after old sash, hardware, and covers are removed.

- Also known as frame-in-frame or a pocket window
- An option for structurally sound wood or aluminum frames
- Preserves existing interior and exterior trim
- Less extensive installation and typically lower cost

Full-frame replacements require existing windows to be completely removed down to the studs, and then new windows are installed in the opening.

- Allows for inspection and repair of concerns like water damage
- Necessary for vinyl or damaged frames and often for remodels
- Requires removal of interior and exterior trim and occasionally siding
- More extensive installation and typically higher cost

SAFE. SECURE. BEAUTIFUL.

Egress

An **egress window** allows for an emergency exit from your home. You'll need to consider egress when replacing **bedroom windows**.

Since building codes have changed over time, the type or size of window that's currently in a bedroom may not comply with current code. We offer a wide range of products that provide egress in almost all existing bedroom window sizes, while maintaining a style that's right for your home.

Window Opening Control Devices

Opening Control Device (shown):

Many municipalities require that windows on upper floors meet a code created to **assist in the prevention of falls**. Marvin offers factory-applied solutions on a wide variety of window types to limit openings to 4" or less. The devices can be disengaged to maintain egress capabilities and are designed to automatically reset each time the window is closed.

Sash Limiter:

Permanently limits opening (without the ability to disengage) on windows that do not require egress capability.



ULTIMATE

MARVIN SIGNATURE® COLLECTION

Part of the Marvin Signature collection, our Ultimate product line unites beautiful design with exceptional craftsmanship.

Add character to almost any space with our most extensive selection of shapes, styles, sizes, and options, including wood interiors protected by tough extruded aluminum exteriors.

With nearly limitless opportunities for customization, Ultimate can match your vision—and give it room to grow.



Ultimate Double Hung G2 windows and Ultimate Sliding French doors

Photo: Laurey Glenn

ULTIMATE | WINDOWS

MARVIN SIGNATURE® COLLECTION

- DOUBLE HUNG
- SINGLE HUNG
- CASEMENT
- AWNING
- GLIDER
- PICTURE
- BOW + BAY
- CORNER
- SPECIALTY



Ultimate Double Hung Insert G2 with Transom windows and Simulated Divided Lites

DOUBLE HUNG + SINGLE HUNG



Ultimate Double Hung G2 windows in White painted interior finish with Simulated Divided Lites

Photo: Laurey Glenn

Double hung windows feature two movable sashes that are hung in the window frame. Both sashes can be opened, and they slide and operate vertically. Locking hardware is typically located on the checkrail, the horizontal portion where the top and bottom sashes meet. A single hung window's top sash is fixed.

Marvin's revolutionary Ultimate Double and Single Hung G2 windows bring innovative design and function in a classically styled window, offering our exclusive auto-lock feature and tilt wash mode.

Available in sizes up to 5' wide x 10' high.



DOUBLE HUNG AND SINGLE HUNG G2

- Choose from a fixed full or half exterior screen
- Insert replacement option available
- Concealed Lock Status Sensor available
- Tilt Wash allows easy access to exterior glass for cleaning
- Auto-lock feature activates when sashes are closed, locking the window
- Exclusive Lift Lock hardware moves the locking mechanism on Ultimate Single Hung G2 from the checkrail to the bottom of the lower sash, allowing for easy access to open and lock the window



WOOD DOUBLE HUNG

- Available exclusively with wood exteriors designed to fit seamlessly into historic homes
- Insert replacement option available
- Full- or half-fixed exterior screen

CASEMENT



Ultimate Glider Bi-parting window in White Oak finish

Photo: Sarah Tramp

Casement windows are hinged on the side and can either swing inward or outward with either crank-out or push/pull hardware functionality.

Ultimate casement windows include our patented Wash Mode, allowing access to both sides of the glass from the inside of your home and making window washing stress- and ladder-free.

With the most durable hardware in the industry, Ultimate casements offer easy opening and smooth operation even at the largest sizes. Casements are available in sizes up to 3' 4" wide up to 8' 6" high. French Casements are available in sizes up to 5' wide x 6' high.



CASEMENT

- Crank-out operation
- Fixed or retractable interior screen
- Narrow frame replacement option available for insert installation
- Concealed Lock Status Sensor available



PUSH OUT CASEMENT

- Integrated operating and locking hardware allows the window to be easily unlocked and opened by turning the handle and pushing out the sash
- Pair with retractable or swinging interior screen to allow access to push-out handle
- Narrow frame replacement option available for insert installation



INSWING CASEMENT

- Unlock and open the window in one motion by turning the handle and swinging the sash inward
- Can open to 180 degrees, so it is completely out of the way when open
- Fixed exterior screen



FRENCH CASEMENT

- Opens like a French door with no center post
- Outswing available with push out or crank out operation and optional interior screen
- Inswing French casements are perfect for areas where an outswing would interfere with a patio, deck, or walkway
- Available in sizes up to 5' wide x 6' high

AWNING



Ultimate Casement, Awning, and Picture windows with Bronze hardware

Awnings are top-hinged windows that swing out from the bottom. With operating and locking hardware located near the sill, awning windows are ideal for harder-to-reach locations, such as over a sink or kitchen counter. They can be used on their own or as a complement to picture and casement windows.

Awning windows are available in expansive sizes up to 6' wide × 6' high that set the industry standard for maximum visual impact and flexibility. Fixed or retractable interior screens are available.



AWNING

- Crank out operation
- Narrow frame replacement option available for insert installation
- Concealed Lock Status Sensor available



PUSH OUT AWNING

- Crank out operation
- Narrow profiles for maximum glass and clean aesthetic
- Narrow frame replacement option available for insert installation
- Concealed Lock Status Sensor available

GLIDER



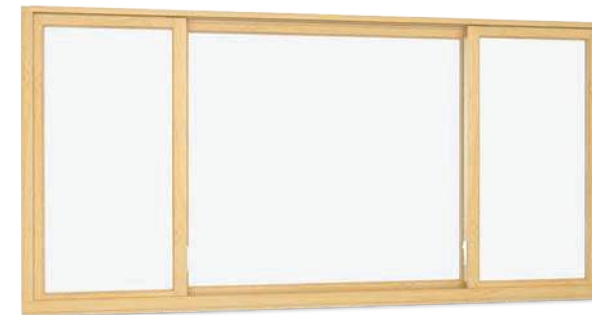
Ultimate Four Panel Bi-Parting Glider window in White painted interior finish

Gliders are windows with panels that slide side to side. They offer a space-saving design option for areas where a swinging window won't work, and they are an excellent egress option for bedrooms.

Marvin's exclusive automatic locking system features an easy-to-reach hide-away handle that blends seamlessly into the sash. With one hand, you can unlock and open the window. The window automatically locks when closed.

**GLIDER**

- Available with one or both operating panels
- Choose from a full exterior screen if both panels operate or a partial screen that covers only operating panels
- Concealed Lock Status Sensor available on units with single operating panel
- Sizes up to 6' wide × 6' high

**TRIPLE SASH GLIDER**

- Fixed center sash with operating panels on both sides
- Exterior screens cover operating panels
- Concealed Lock Status Sensor available
- Sizes up to 10' wide × 6' high

**FOUR-PANEL BI-PARTING GLIDER**

- Center panels slide to each side of the window, providing a pass-through to an outdoor space
- Exterior screens available as a fixed screen or an operable screen to allow for pass-through
- Sizes up to 14' wide × 6' high

PICTURE



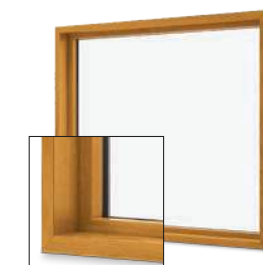
Ultimate Direct Glaze Picture and Casement windows

**VENTING PICTURE**

- Patented hidden screen system
- Opens evenly on all sides for passive air exchange
- Provides ventilation when positioned strategically with other windows
- Can enhance security by reducing the appearance of an open window from the exterior
- Available in sizes up to 6' wide x 8' high

**IN-SASH PICTURE**

- Fixed windows designed to match the profiles of operable windows like casement, awning, or double hung
- Available in large sizes up to 8' wide x 8' high

**DIRECT GLAZE PICTURE**

- Fixed window with no sash—the glass is glazed directly into the frame
- Available in stunningly large sizes with widths and heights up to 12'

**POLYGON**

- Fixed windows available in a nearly unlimited variety of sizes and shapes
- Ideal for combining multiple units to create open, light-filled spaces
- Available in stunningly large sizes with widths and heights up to 12'

BOW + BAY + CORNER



Ultimate Direct Glaze Corner windows

These windows make the most of panoramic views in homes by becoming a design focal point, adding interest to both the interior and exterior of your home. Maximize views and capture light from multiple angles with these unique feature windows.



BOW

- Made up of a series of windows connected in a gentle curve
- Can be created with combinations of 3-6 casement, awning, or double hung windows



BAY

- Made up of a series of windows—traditionally, a picture window flanked by smaller windows (either double hung or casement) at 30- or 45-degree angles
- Center window can be a venting or stationary picture window or an operating unit of the same type as the flankers
- Can be created with combinations of casement or double hung windows



CORNER

- Provides a clean aesthetic and minimal visual disruption for a dramatic corner view
- Symmetrical or asymmetrical configurations available
- Available in symmetrical or unequal widths up to 6' 3" on each side and heights up to 10'

SPECIALTY



Ultimate Specialty Shape windows with Simulated Divided Lites

**SPECIALTY SHAPES**

- Go beyond the usual rectangle and choose from a wide variety of shapes to match your home's ideal feature window
- Many specialty shape windows are available as operating windows

**POLYGON**

- Fixed windows available in a nearly unlimited variety of sizes and shapes
- Ideal for combining multiple units to create open, light-filled spaces
- Available in stunningly large sizes with widths and heights up to 12'



ULTIMATE | DOORS

MARVIN SIGNATURE® COLLECTION

SLIDING
SWINGING
SCENIC



Ultimate Inswing door with Hazlenut stain

SLIDING DOORS



Ultimate Sliding French doors with Simulated Divided Lites

Marvin Ultimate sliding doors set the industry standard for effortless and graceful operation. Our range of sizes allows you to create a door to fit nearly any existing opening with two-, three-, and four-panel configurations. Hardware style and color options, along with custom divided lite patterns, perfectly complement any room or design.

Available in configurations from 5' wide × 6' 6" high up to 16' wide × 8' high with sliding exterior screens.



SLIDING FRENCH DOOR

- Classic elegance of a traditional French door with tall bottom rails in a space-saving sliding design



SLIDING PATIO DOOR

- Contemporary 3" stiles and rails maximize your view

Our high-performance low-profile sill is an innovative sill option that provides a smooth transition with a flush threshold between exterior and interior living spaces. The sill is compatible with all Marvin Ultimate Sliding French and Sliding Patio doors.

SWINGING DOORS



Ultimate Outswing door with Satin Nickel hardware

When choosing between inswing or outswing doors, consider traffic flow, furniture placement, and obstacles such as snow on your outdoor space to determine which suits your application best.

Our secure and stable multi-point locking system, available on all Ultimate swinging doors, secures your door at three hidden locking points: at the handle, and at the top, and bottom of the door.

Inswing and outswing doors with matching sidelites and transoms are available with sliding or swinging screens, depending on door configuration.



SWINGING DOOR

- Contemporary panel aesthetic with 3" stiles and rails
- One-, two-, three-, and four-panel configurations
- Unequal panel widths available
- Available in sizes from 2' wide × 6' 8" high up to 14' wide × 10' high
- Inswing or outswing options



SWINGING FRENCH DOOR G2

- Classic panel aesthetic features 4 3/4" stiles and top rail and 8 1/8" bottom rail
- One-, two-, three-, and four-panel configurations
- Available in sizes from 2' wide × 6' 8" high up to 14' wide × 10' high
- Wood exterior Swinging French doors available in heights up to 8'
- Inswing or outswing options



SWINGING ARCH TOP FRENCH DOOR

- One- and two-panel configurations
- Available in sizes from 2' 6" wide × 6' 8" high up to 6' wide × 9' high

SCENIC DOORS



Ultimate Bi-Fold doors in Ebony

Marvin Ultimate scenic doors provide big glass and clean design aesthetics to give you more flexibility and strengthen your connection to the outdoors. Consider smaller two- or three-panel configurations for a feature space in your home. Scenic door installations are typically more complicated than a standard door replacement, making them ideal for new additions and more extensive home remodels.

**BI-FOLD DOOR**

- Available in two-panel configurations starting at 5' wide × 6' 8" high and up to ten-panel configurations at 55' wide × 10' high
- All-wood surface option available, ideal for dividing interior spaces

**MULTI-SLIDE DOOR + LIFT AND SLIDE DOOR**

- Available in two-panel configurations starting at 6' wide × 7' high
- Large sizes available for openings up to 56' wide × 12' high



ULTIMATE | OPTIONS

MARVIN SIGNATURE® COLLECTION

- INTERIORS
- STAINS + PAINTS
- EXTERIORS
- CASINGS
- HARDWARE
- DIVIDED LITES
- SCREENS
- GLASS
- LOCK STATUS SENSOR

Ultimate Single Hung G2 window with Contemporary Lift Lock in Satin Nickel

INTERIOR WOOD + FINISH OPTIONS

WOOD INTERIORS

PINE

VERTICAL GRAIN
DOUGLAS FIR

MIXED GRAIN DOUGLAS FIR

CHERRY

WHITE OAK

HONDURAN MAHOGANY

MAPLE
Custom option

BLACK WALNUT
Custom option

STAIN

CLEAR

WHEAT

HONEY

HAZELNUT

LEATHER

CABERNET

ESPRESSO

PAINT

DESIGNER BLACK PAINTED INTERIOR
Factory painting

WHITE PAINTED INTERIOR
Factory painting

PRIMED WHITE
Paint your own

Our multi-step integrated conditioning and staining process begins before assembling windows and doors. Each individual piece of wood is sanded, conditioned, stained, and oven-cured. The finished pieces are clear-coated and then sanded and clear-coated a second time, providing a rich, ideal finish.

We take these extra steps to create a more consistent, high-quality, and durable finish that brings out wood's natural beauty—one that at-home finishing can't replicate.

Stain and paint samples are shown on pine.



Ultimate Bi-Fold door in Mahogany with Clear Finish

EXTERIOR COLORS + MATERIALS

STONE WHITE

COCONUT CREAM

SIERRA WHITE

CASHMERE

PEBBLE GRAY

HAMPTON SAGE

CADET GRAY

CLAY

CASCADE BLUE

SUEDE

GUNMETAL

WINEBERRY

BRONZE

BAHAMA BROWN

EVERGREEN

EBONY

BRIGHT SILVER (PEARLESCENT)

COPPER (PEARLESCENT)

LIBERTY BRONZE (PEARLESCENT)

CUSTOM COLOR: ANY COLOR YOU WANT

Complement any project or design with our high-quality exterior options. Choose from extruded aluminum or wood.

EXTRUDED ALUMINUM

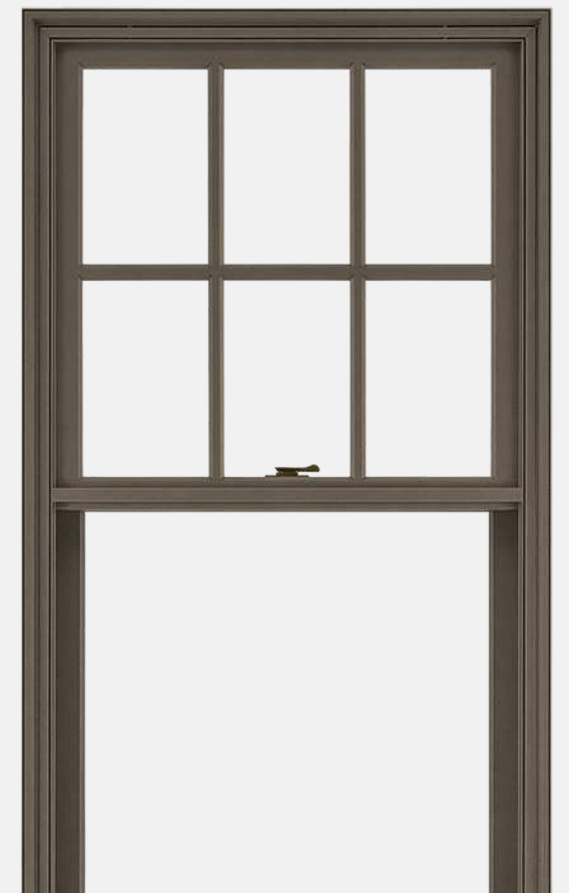
Extruded aluminum is an extremely tough cladding that protects wood windows, mimics the profiles of wood, and provides superior durability.

Select a color from our palette of 19 durable extruded aluminum colors, including a spectrum of rich hues and three pearlescent finishes. If you have more specialized needs, we can work with you to create a custom color.



Ultimate Double Hung G2 window in Ebony

Ultimate Double Hung G2 window in Suede



WOOD EXTERIORS

Wood is a premium material for windows and doors, offering classic aesthetic appeal, many options for customization, and design versatility.

We treat exposed millwork with a water repellent wood preservative to help it last longer. Choose from one of four exterior options. Each is ready to be finished to match your project's exacting requirements.

PINE

VERTICAL GRAIN
DOUGLAS FIR

MAHOGANY

WESTERN RED CEDAR
Exterior trim package only

EXTERIOR CASINGS



Grayson Casing in Bronze



Potter Casing with A1451 Subsill in Cascade Blue

EXTERIOR CASINGS + SUBSILLS

Adding Marvin extruded aluminum or wood casings and subsills to your windows and doors provides great architectural detail to any home. Ultra-durable extruded aluminum casings feature a beautiful factory applied finish that resists chalking, fading, pitting, corrosion, and marring. Casing profiles are consistent around the sides and top of a window or door, except for the Potter casing profile, which has a taller head. Custom casings and subsills are also available.



BRICK MOULD CASING WITH A246 SUBSILL



FLAT CASING WITH A246 SUBSILL



COLUMBUS CASING WITH A1450 SUBSILL



RIDGELAND CASING WITH A1453 SUBSILL



GRAYSON CASING WITH A1451 SUBSILL



THORTON CASING WITH A1450 SUBSILL



STRATTON CASING WITH A1453 SUBSILL



POTTER CASING WITH A217 SUBSILL

WINDOW HARDWARE STYLES



Window Hardware and Finishes

Our durable and elegant hardware is engineered to work seamlessly with any decor. Choose a finish to complement your architectural style.

WINDOW HARDWARE STYLES



**AUTO-LOCKING CHECKRAIL
HARDWARE SYSTEM**
Single/Double Hung G2



**AUTO-LOCKING LOWER SASH
TRADITIONAL LIFT LOCK**
Single Hung G2



**AUTO-LOCKING LOWER SASH
CONTEMPORARY LIFT LOCK**
Single Hung G2



FOLDING HANDLE
Glider



PUSH-OUT HANDLE
Casement/Awning Push Out



FOLDING CRANK HANDLE
Casement and Awning

FINISHES

- MATTE BLACK
- BRONZE
- OIL-RUBBED BRONZE
- ANTIQUE BRASS
- SATIN TAUPE
- SATIN NICKEL
- BRASS
- POLISHED CHROME
- SATIN CHROME
- WHITE

DOOR HARDWARE STYLES

Door Hardware and Finishes

Marvin Ultimate door hardware is not only beautiful, it's also engineered for durability. Add style to your home with its graceful curves, ergonomic design, and elegant finishes.

Choose from a variety of finishes to complement your Marvin Ultimate doors. The Physical Vapor Deposition* (PVD) process adds a layer of toughness to hardware exposed to environmental factors like direct sun and humidity. PVD finishes resist fading and discoloration, even in coastal areas. Satin Nickel, Brass, and Oil-Rubbed Bronze finishes are available with a PVD finish.

*Physical Vapor Deposition: highest grade corrosion resistance finish. Available on exterior door hardware.

Ultimate Inswing French door with Contemporary swinging hardware in Matte Black

DOOR HARDWARE STYLES



TRADITIONAL SWINGING FRENCH DOOR HANDLE



TRADITIONAL SLIDING FRENCH DOOR HANDLE



TRADITIONAL SLIDING PATIO DOOR HANDLE



ADJUSTABLE HINGE



CONTEMPORARY SWINGING DOOR HANDLE



CONTEMPORARY SLIDING DOOR HANDLE



MINIMALIST SWINGING DOOR HANDLE

FINISHES

- MATTE BLACK
- OIL-RUBBED BRONZE
- DARK BRONZE
- OIL-RUBBED BRONZE PVD
- ANTIQUE BRASS
- SATIN TAUPE
- SATIN NICKEL PVD
- BRASS PVD
- SATIN CHROME
- WHITE

MARVIN GALLERY HARDWARE

Bouvet Arch Twisted Hardware in Black



Marvin Gallery Hardware is a curation of door hardware from three renowned manufacturers. Each set chosen meets Marvin's high standards for aesthetics, quality, and craftsmanship. A perfect complement to Marvin Ultimate doors.

This hardware collection makes it easy for you to find the hardware choice that perfectly reflects your unique design sensibilities, vision, and personality. From contemporary to traditional, each beautiful piece heightens the aesthetics of any Marvin door.



Ashley Norton Rectangular Meridian hardware in White Bronze

GALLERY HARDWARE STYLES

ASHLEY NORTON



BOUVET



ROCKY MOUNTAIN HARDWARE



See more selections at marvin.com/galleryhardware

HOME AUTOMATION: LOCK STATUS SENSOR

Concealed automation to preserve peace of mind

Our home automation sensors work with your security system to help protect your home. This optional upgrade offers concealed design, which preserves the beauty of your Ultimate windows and doors without impacting performance, design, or your view.



Our factory-installed Lock Status Sensor sends a signal to your integrated security system to indicate if a window or door is closed and locked, or if it is unlocked.

Each window and door equipped with the Marvin Lock Status Sensor arrives with the sensor already installed and concealed, so there's no need for post-installation modifications that could cause damage, require unsightly add-ons, or affect warranty. Unlike competitors' options that only talk to specific systems, the Marvin Lock Status Sensor is system agnostic, so it works seamlessly with most leading third-party home automation HUB and service providers via wired or wireless connection.



Ultimate Double Hung G2 windows and Ultimate Inswing French door with concealed Lock Status Sensors

SCREENS



WINDOW SCREENS



CASEMENT AND AWNING WOOD SCREEN SURROUND

The patented wood interior screen surround can be painted or stained to match the interior of your window.



DOUBLE HUNG FULL OR HALF SCREEN

Full or half screens are exterior screens with aluminum surrounds. The full screen covers both the top and bottom sash. The half screen covers only the bottom sash to allow for a clear view through the top portion of the window.



SWINGING SCREEN

This screen swings inward to allow for operation of push-out casement and awning windows.

DOOR SCREENS



ULTIMATE SWINGING SCREEN

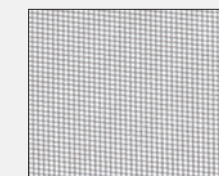


ULTIMATE SLIDING SCREEN

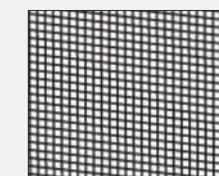
SCREEN MESH

Window screens are made of a close-mesh woven material of metal or fiberglass attached to an aluminum or wood surround.

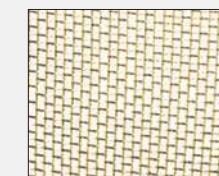
Whether your screen is on the inside or outside of your home, the screen surround can be matched to your window or door.



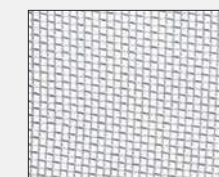
MARVIN BRIGHT VIEW™



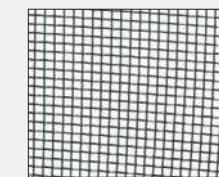
BLACK ALUMINUM WIRE



BRIGHT BRONZE WIRE



BRIGHT ALUMINUM WIRE



CHARCOAL ALUMINUM WIRE

Marvin products come standard with Marvin Bright View™ mesh – a fiberglass screen mesh that provides improved airflow and more natural light while keeping insects out. Bright View repels water and resists dirt and grime for a sharp, vivid view.



ALUMINUM SURROUND



WOOD SURROUND

DIVIDED LITES



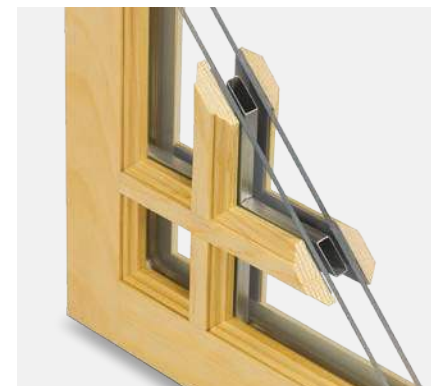
Ultimate Sliding French door and Ultimate Double Hung G2 windows with Simulated Divided Lites in Bronze

Photo: Laury Glenn



Endless Design Possibilities

Our custom capabilities allow us to create almost any divided lite pattern to match your design style. Divided lites can feature an array of widths, unique profiles, rectangular or curved cuts, and more. Choose from an existing lite cut or specify custom divided lites according to a new design.



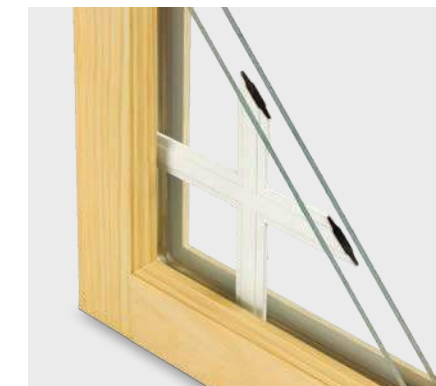
SIMULATED DIVIDED LITE (SDL)

SDL bars are permanently adhered to both sides of the glass. Simulated Divided Lites with Spacer Bars (SDLS) are an energy-efficient way to create the look of authentic divided lites.



AUTHENTIC DIVIDED LITE (ADL)

Separate panes of glass are glazed between bars—the way windows have been made since the beginning. Available exclusively with wood exterior units.



GRILLES-BETWEEN-THE-GLASS (GBG)

Grilles are permanently installed between the glass panes. This low-maintenance grille offers the look of a divided lite pattern with the ease of cleaning just one pane of glass. Available with different interior and exterior colors.

STICKING AND PROFILES

Sticking refers to the interior profiles of your wood window. Choose from the standard Ogee profile (used on traditional projects) or the optional clean, contemporary Square sticking.



Ogee



Square



Square sticking

FIVE STANDARD BAR WIDTHS

Ogee:



5/8"

7/8"

(default width)

1 1/8"

1 15/16"

2 13/32"

Square Sticking:



5/8"

7/8"

(default width)

1 1/8"

1 15/16"

2 13/32"

GLASS

DUAL PANE VS. TRIPLE PANE



DUAL PANE

Our standard glazing is dual pane: two panes of glass with Low E coatings and insulated with argon gas. Compared to a single glass pane, dual pane glass cuts heat loss significantly because of the insulating space between the glass layers.

TRIPLE PANE: IS IT RIGHT FOR YOU?

While Marvin triple pane windows are engineered for long-lasting energy efficiency, not all windows are made the same. Simply having three panes of glass doesn't necessarily mean a triple pane window is more energy efficient. Glass coatings, the type of gas used in the spaces between the glass, the design of the window, the materials used, and how well it is installed all play a role in achieving the overall energy efficiency. Consider the energy efficiency of the entire window, not just the number of panes.

Visit marvin.com/energyratings to view detailed performance ratings for all Marvin products.



TRIPLE PANE

Triple Pane glazing provides three panes of glass with Low E coatings. Two glass spaces are insulated with argon gas between the panes.

A poorly designed or installed window, or a window made with inferior materials like vinyl, may not be energy efficient regardless of the number of panes of glass. Materials shrink and expand with cold/heat cycles and seals can begin to fail. Once seals fail, the energy efficiency the window claimed when it was new becomes greatly reduced. Consider your home's unique needs before assuming that triple pane, or tripane, is always the best solution.

COATINGS & ENERGY EFFICIENCY

Low E coatings are a microscopically thin, virtually invisible metallic layer on the glass surface that help manage the amount of heat either radiated through a window or reflected away from it. Marvin products are offered with a variety of Low E coating options for thermal performance best suited for your heating and cooling needs.

The national ENERGY STAR® program recognizes products that meet strict energy efficiency guidelines to suit climates in different areas of the country. No matter where you are located, we offer energy efficient solutions that meet or exceed ENERGY STAR guidelines.

Visit marvin.com/energy for more information.

LOW E1	Single layer of metallic coating, which reduces heat loss to the outside while allowing the highest levels of solar heat into a room. Generally used in Northern climates where heating is prioritized over cooling.
LOW E2	Double layer of metallic coating. Provides year-round performance and comfort. Works well in most geographic regions and climates where a mix of heating and cooling is required.
LOW E3	Triple layer of metallic coating provides the most protection against solar heat gain (warmth from the sun). Most commonly used in climates where sun exposure is intense and cooling is a priority.
LOW ERS	A high-performance insulating glass option that features a Low E coating on the Room-Side glass together with a coating of Low E2 or Low E3 on the second glass surface. This option is designed to reflect radiant heat back into the room. It is not recommended for some northern zones, as condensation is more likely to occur.

DECORATIVE + SPECIALTY GLASS OPTIONS

Glass goes beyond energy efficiency. Decorative and privacy glass, and even specialty glass that provides additional sound reduction, can be paired with thermal performance options for a window or door that is perfect for your home.

DECORATIVE GLASS

Decorative glass options on Ultimate windows and doors are offered with your choice of Low E coatings for energy efficiency and your own unique style.



BRONZE TINT



GRAY TINT



GREEN TINT



BEVELED



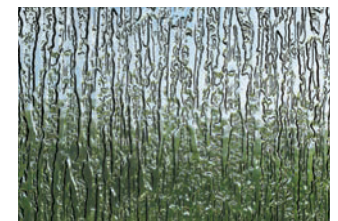
OBSCURE



FLEMISH



GLUE CHIP



RAIN



REEDED



NARROW REED



AQUALITE



WHITE LAMINATED



SANDBLASTED



LEADED



V-GROOVE



FROST

SPECIALTY GLASS

Our specialty glass options include glazing for unique project requirements like sound reduction, high altitudes, Sea Turtle Conservation Codes, and California fire zones. We also offer laminated glass in products designed specifically for hurricane zones.

ULTREX® FIBERGLASS

VS. OTHER COMPOSITES

Born from a Marvin innovation 20+ years ago, Ultrex has led the industry ever since on virtually every measurable scale, outperforming vinyl with its durability and performance.

Durable Material

Highly durable, strong as steel, and extremely reliable, Ultrex's proprietary finish is the best in the industry. It resists fading, chalking, cracking, and peeling—so it's tough and incredibly low-maintenance.

Long-lasting performance

Unlike vinyl and other composite materials, Ultrex expands and contracts at virtually the same rate as glass, so it works with glass rather than against it. This means its seals aren't as prone to leaking and windows aren't subjected to sagging issues.



Elevate French door cross section

ELEVATE

MARVIN ELEVATE® COLLECTION

Balancing beautiful design with superior strength, the Marvin Elevate collection delivers style in any climate.

Elevate windows and doors feature warm wood interiors that can blend in or stand out with fiberglass exteriors for lasting durability.

The collection offers a range of carefully selected features and options, making it as versatile as it is elegant.

Elevate Casement and Picture windows in Ebony

ELEVATE

MARVIN ELEVATE® COLLECTION

WINDOWS

- DOUBLE HUNG
- CASEMENT
- AWNING
- GLIDER
- SPECIALTY



Elevate Double Hung windows with Window Opening Control Devices

DOUBLE HUNG



Double hung windows can be opened from the bottom or lowered from the top, pairing clean, balanced design with superior function. Tilt the sash in or remove for easy cleaning. Coordinating Picture and Transom windows are available.



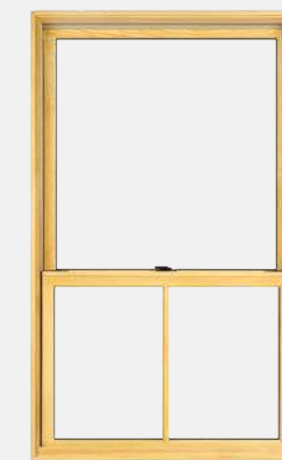
DOUBLE HUNG

- Common egress solutions for bedrooms
- Full or half exterior screens
- Insert replacement option available
- Available in sizes up to 4' 6" wide x 7' high

Options



**COTTAGE
SASH RATIO**



**REVERSE COTTAGE
SASH RATIO**

Elevate Double Hung windows with White hardware

CASEMENT + AWNING



Elevate Casement, Awning, and Direct Glaze windows with Matte Black hardware

A casement window is a side-hinged window that swings out from the left or right, while awnings are top-hinged windows that swing out from the bottom. Most casement and awning windows crank open and closed.

Many casements on the market have multiple locking levers which can be hard to reach and don't always engage properly. Elevate Casement and Awning windows feature a concealed

multi-point sequential locking system, which securely locks the window at multiple points along the side stile with one easy-to-reach lever near the bottom of the window.

Casement and awning windows offer interior screens with White, Almond Frost, or a wood-wrapped surround that can be finished to match your wood interior. Coordinating Picture and Transom windows are available.



CASEMENT

- Crank out operation
- Common egress solution for bedrooms
- Narrow frame replacement option available for insert installation
- Available in sizes up to 3' wide × 6' high



AWNING

- Crank out operation
- Great solution for over a sink or counter
- Narrow frame replacement option available for insert installation
- Available in sizes up to 4' wide × 4' high

Option



SIMULATED CHECKRAIL

A simulated checkrail is a 2¹¹/₃₂" high divided lite bar that can be used to simulate the look of a double hung window while still enjoying the operation and egress capability of a casement. With custom placement anywhere on the window, and paired with ⁷/₈" divided lite bar patterns above and below, this option offers wonderful flexibility for creating a unique look that's perfect for your home. See the divided lites section on page 104 for more details.

GLIDER



Elevate Glider window in painted White with White hardware

On a glider, either the left or right sash slides open. Locking mechanisms keep windows secure, and the operating sash tilts inward for easy cleaning. Coordinating Picture and Transom windows are available.

**GLIDER**

- Common egress solution for bedrooms
- Exterior half screen covers operating panels
- Available in sizes up to 6' wide × 5' high

**TRIPLE SASH GLIDER**

- Center picture window flanked by two operating panels
- Exterior screens cover operating panels
- Available in sizes up to 8' wide × 5' high

SPECIALTY

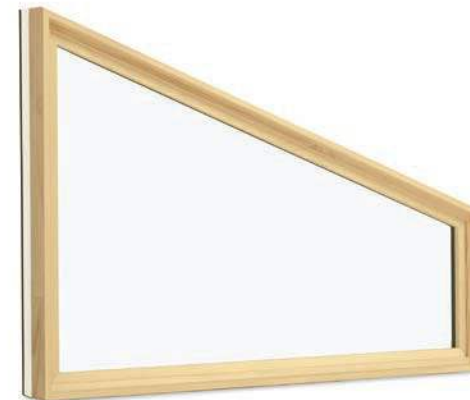


Elevate Specialty Shapes, Casement, and Picture windows

**ROUND TOP**

The Elevate Round Top window is an exciting complementary piece, adding light and flair to windows and turning doors into grand entrances.

- Wide range of sizes
- Extruded aluminum exterior
- Available in quarter-round, half-round, and elliptical shapes

**SPECIALTY SHAPES**

Elevate Polygon windows offer exceptional design versatility. Select specialty shapes for sidelights and transoms, or combine them into a breathtaking wall of windows

- Eight shapes, including rectangles, triangles, pentagons, and octagons
- Available in sizes up to 49 square feet
- Longest leg may not exceed 9'

**BAY AND BOW**

Bays are made up of three windows—either casements, double hungs, or pictures—joined together at 30- or 45-degree angles.

- Configurations are available up to 7' wide × 6' high
- Traditionally, a larger picture window is flanked by smaller operating windows

Bows are made up of a series of 4 or 5 equally sized casement, double hung, or picture windows connected in a gentle curve.

- Configurations are available up to 10' wide × 6' high

ELEVATE | DOORS

MARVIN ELEVATE® COLLECTION

BI-FOLD
SLIDING
SWINGING



Elevate Inswing French door with Northfield Matte Black handle

BI-FOLD DOORS



Elevate Bi-Fold Door in Ebony

The Elevate Bi-Fold door allows you to effortlessly slide and stack the door open to enjoy your own scenic view and invite maximum airflow into your home.

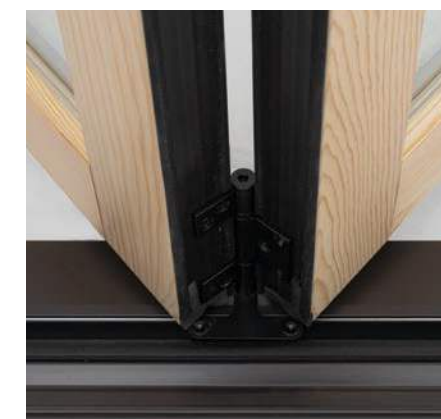
- Available in configurations up to 7 panels and fits openings up to 22' wide by 8' high
- Choose from 28 operating configurations
- Carefully engineered top-hung design for effortless operation
- Integrated multi-point locking system



INTERIOR



EXTERIOR



BOTTOM HINGE

SLIDING + SWINGING DOORS



Elevate Sliding French door with Cambridge handle in Satin Nickel PVD

Elevate doors are the perfect complement to Elevate replacement windows. Our doors are available with custom sizing and the same great hardware, color, insulated glass, divided lite patterns, and exterior trim options as our windows.



SLIDING FRENCH DOOR

The Elevate Sliding French door combines the elegance and wider stiles and rails of a French door with the practicality of a sliding door.

- Two-, three-, and four-panel configurations
- Available in large sizes up to 16' wide x 8' high
- Sliding exterior screens available



SLIDING PATIO DOOR

The Elevate Sliding Patio door's narrow stiles and rails offer contemporary styling with more glass to showcase outdoor views.

- Two- and three-panel configurations
- Available in sizes up to 9' wide x 8' high
- Sliding exterior screens



FRENCH DOOR (INSWING & OUTSWING)

With one-, two-, and three-panel configurations up to 8' high, Elevate Inswing and Outswing French doors offer tremendous versatility to create entrances and connections with exterior living spaces.

Inswing doors are an ideal fit for doors that open over steps or areas where rain would fall on them when open, as well as in climates prone to snow that would block use during the winter. Inswing doors have exterior screens.

Outswing doors open your home to an outdoor space without interrupting interior flow or design.

ESSENTIAL

MARVIN ESSENTIAL™ COLLECTION

Characterized by clean lines, powerful performance, and streamlined options, the Marvin Essential collection makes it easier to achieve design and quality.

Essential features durable fiberglass exteriors and interiors, making it stylistically striking and virtually maintenance free—inside and out.



Essential Casement, Picture, and Awning windows in Ebony

Essential Casement windows in Bronze

ESSENTIAL
MARVIN ESSENTIAL™ COLLECTION

+ WINDOWS
DOORS

- DOUBLE HUNG
- SINGLE HUNG
- CASEMENT
- AWNING
- GLIDER
- PICTURE
- SPECIALTY
- SLIDING DOOR

MARVIN™



Essential Single Hung in Stone White with White hardware

DOUBLE HUNG + SINGLE HUNG



Essential Double Hung windows in Stone White

Double hung windows can be opened from the bottom or lowered from the top, pairing clean, balanced design with function. Tilt the sash in or remove for easy cleaning.

Single hung windows look just like a double hung, but they have a fixed top sash that doesn't open or tilt in.



DOUBLE HUNG + SINGLE HUNG

- Common egress solutions for bedrooms
- Full or half exterior screens
- Available with Stone White, Ebony, Gunmetal or Bronze interiors
- Insert replacement available
- Available in sizes up to 4' wide × 6' 5" high

Options



COTTAGE
SASH RATIO



REVERSE COTTAGE
SASH RATIO

CASEMENT + AWNING



Essential Casement windows in Ebony with Matte Black hardware

A casement window is a side-hinged window that swings out from the left or right, while awnings are top-hinged windows that swing out from the bottom. Most casement and awning windows crank open and closed.

Many casements on the market have multiple locking levers which can be hard to reach and don't always engage properly. Our casement and awning windows feature a concealed multi-point sequential locking system, which securely locks the window at multiple points along the side stile with one easy-to-reach lever near the bottom of the window.



CASEMENT

- Crank out operation
- Common egress solution for bedrooms
- Available with Stone White, Ebony, Gunmetal or Bronze interiors and matching interior screens
- Narrow frame replacement option available for insert installation
- Available in sizes up to 3' wide × 6' high



AWNING

- Crank out operation
- Available with Stone White, Ebony, Gunmetal or Bronze interiors and matching interior screens
- Narrow frame replacement option available for insert installation
- Available in sizes up to 4' wide × 3' high

GLIDER + SPECIALTY



Essential Glider window in Ebony

**DUAL AND TRIPLE SASH GLIDER**

- Dual sash configurations up to 6' wide × 5' high
- Triple sash configuration features center picture window flanked by two operating gliders in sizes up to 8' wide × 5' high
- Available with Stone White, Ebony, Gunmetal or Bronze interiors
- Exterior half screen covers operating panels
- Narrow frame replacement available for installation

**ROUND TOP**

- Available in quarter-round, half-round, and elliptical shapes
- Available with Stone White, Ebony, Gunmetal or Bronze interiors
- Wide range of sizes up to 8' wide × 7' high

**SPECIALTY SHAPES**

Essential Polygon windows offer exceptional design versatility. Select specialty shapes for sidelights and transoms, or combine them into a breathtaking wall of windows

- Available in eight unique shapes including rectangles, triangles, pentagons, and octagons
- Available with Stone White, Ebony, Gunmetal or Bronze interiors
- Available in sizes up to 49 square feet
- Longest leg may not exceed 9.5'

SLIDING PATIO DOOR



Essential Sliding Patio door in Bronze with Cambridge handle in Matte Black

The Essential Sliding Patio door delivers style, durability, and unobstructed views that show more glass – ideal for contemporary styles.

Select the configuration best for your space. Choose from left, middle, or right operating panels in two- or three-panel doors.



SLIDING PATIO DOOR

- Two-panel configurations available up to 6' wide × 8' high
- Three-panel configurations available at 9' wide × up to 8' high
- Top-hung screen operates smoothly without jamming
- Available with Stone White, Ebony, Gunmetal or Bronze interiors



ELEVATE | ESSENTIAL
MARVIN ELEVATE® COLLECTION | MARVIN ESSENTIAL™ COLLECTION

OPTIONS

- INTERIORS + FINISHES
- EXTERIORS + TRIM
- HARDWARE
- DIVIDED LITES
- SCREENS
- GLASS

Elevate Double Hung windows in painted White with White hardware

INTERIORS + EXTERIORS



Elevate Casement windows with Simulated Checkrails and Grills-between-the-Glass in painted Designer Black with Matte Black hardware

ELEVATE INTERIORS

Elevate features rich pine interiors. Choose bare wood to stain or paint to match your decor. Factory-applied clear coat and White or Designer Black painted interior finish options are available.

BARE WOOD

Wood comes bare and ready to be painted or stained

CLEAR FINISH

Wood is prefinished in the factory with a clear coat (no stain) so it needs no further finishing

PAINTED WHITE

Factory painted

PAINTED DESIGNER BLACK

Factory painted

ELEVATE + ESSENTIAL FIBERGLASS EXTERIORS

Elevate and Essential windows and doors have a durable strong proprietary Ultrex® fiberglass exterior, featuring our patented AAMA-verified* acrylic finish for low-maintenance durability and superior aesthetics.

Choose from a variety of colors and exterior trim configurations to match your style.

STONE WHITE

CASHMERE

PEBBLE GRAY

BRONZE

GUNMETAL

EBONY

ESSENTIAL INTERIORS

Fiberglass interiors in your choice of four colors.

STONE WHITE

Available with your choice of exterior finish colors

BRONZE

Available when paired with Bronze exterior finish

GUNMETAL

Available when paired with Gunmetal exterior finish

EBONY

Available when paired with Ebony exterior finish

*What is an AAMA-verified finish?

The Fenestration and Glazing Industry Alliance (FGIA) recognizes materials that pass numerous, rigorous tests based on the American Architectural Manufacturers Association (AAMA) standards.

These tests simulate the harsh conditions that a finish will encounter throughout the life of the window or door. Passing these specification tests and achieving AAMA 624 verification gives Marvin Elevate and Essential products independent verification that the Ultrex finish is best in class among fiberglass products.

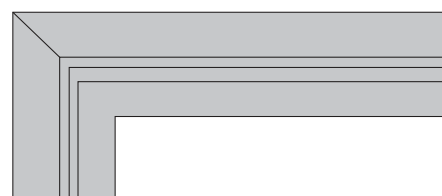
EXTERIOR TRIM

We extend the same durability, performance, and look of Elevate and Essential windows and doors to our exterior trim made of genuine Ultrex® fiberglass. Available for all rectangular products in six exterior colors to either match or contrast with your Elevate and Essential window and door exteriors.

WINDOW + DOOR TRIM CONFIGURATIONS

Your choice of three configurations will be factory cut for an incredibly precise fit and efficient installation.

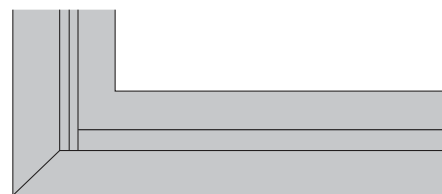
BRICK MOULD



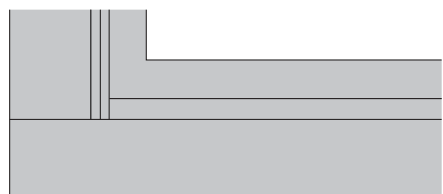
FLAT



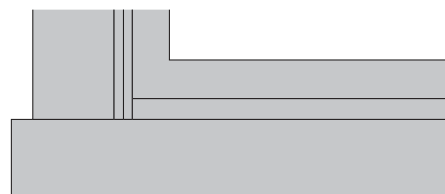
FLAT RANCH



BRICK MOULD

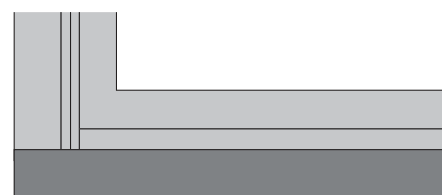


FLAT

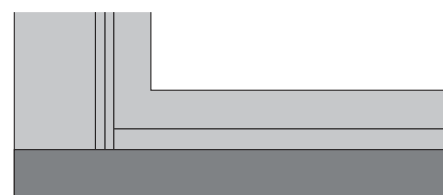


FLAT RANCH

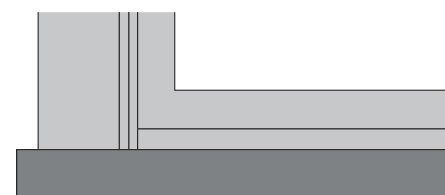
SILL NOSE (WINDOWS ONLY)



**BRICK MOULD
WITH SILL NOSE**

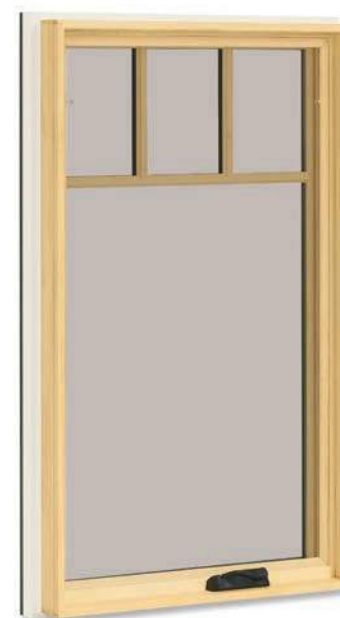


**FLAT
WITH SILL NOSE**



**FLAT RANCH
WITH SILL NOSE**

SCREENS



WINDOWS

- Interior screens for casement and awning windows are available with a paintable or stainable wood interior surround for Elevate windows, or an aluminum surround in Stone White, Ebony, Bronze, Gunmetal or Almond Frost*
- Exterior screens for double hung, single hung, and glider windows are available in colors to match Ultrex® fiberglass exteriors
- Single and double hung windows are available with either a standard full screen or optional half screen
- Marvin products come standard with Marvin Bright View™ mesh - a fiberglass screen mesh that provides improved airflow and more natural light while keeping insects out. Bright View repels water and resists dirt and grime for a sharp, vivid view

* Almond Frost available on Elevate



DOORS

- Elevate and Essential doors are available with either sliding or swinging screens, depending on door configuration
- Top-hung sliding screens are designed for smooth operation without getting caught on dirt or pebbles in the bottom track

HARDWARE STYLES + FINISHES

WINDOW HARDWARE

Windows feature classic low-profile durable hardware for clean aesthetics, safety, and security.



SASH LOCK
Double Hung, Single Hung, and Glider



SASH LIFT
Optional on Elevate Double Hung Insert windows only



FOLDING HANDLE
Casement and Awning

DOOR HANDLES

Door handles are available in two distinct hardware styles.



CAMBRIDGE



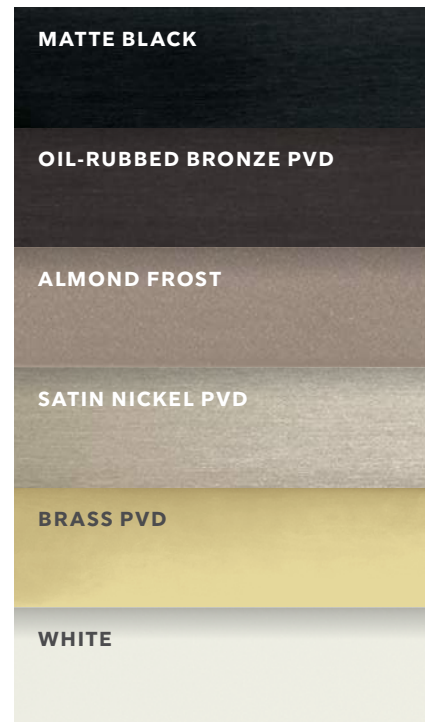
NORTHFIELD*

Door Handle Options

- Available keyed-alike option (use one key on multiple locks) with up to 3 different keys on each project
- Choose distinct exterior and interior handle colors in a color that matches or complements the exterior color and the interior finish of your door

* Available on Elevate products only

FINISHES



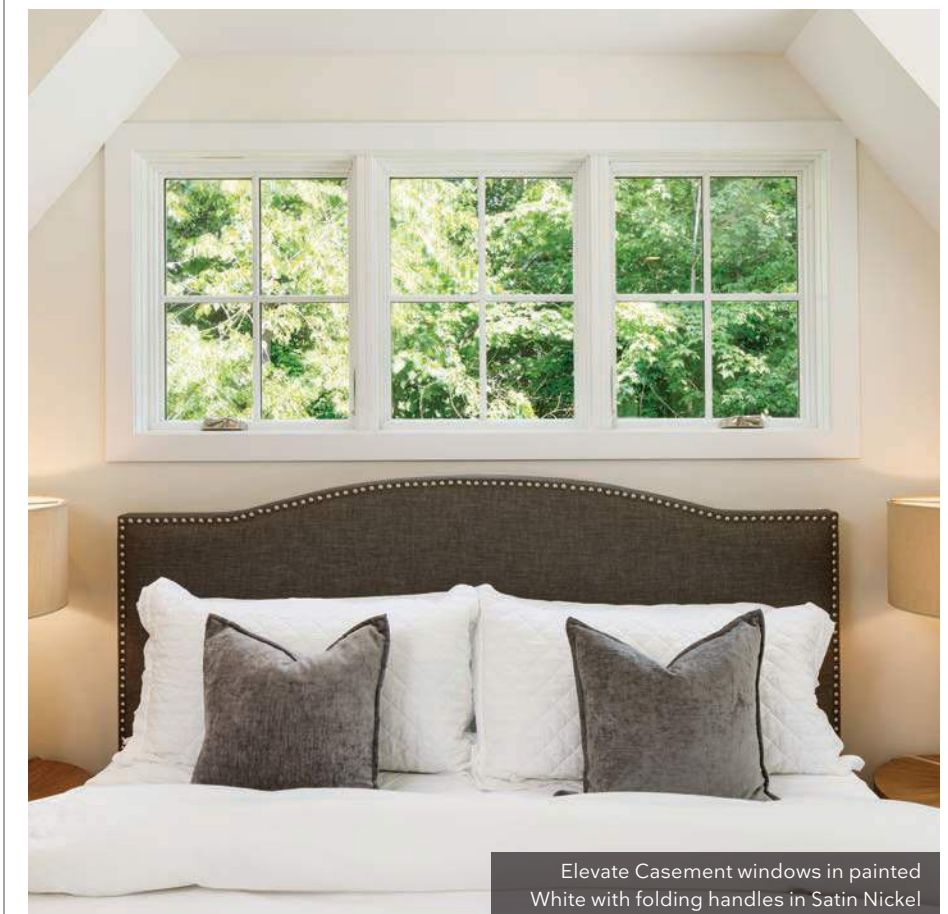
Choose from a variety of finishes to complement your Essential and Elevate windows and doors.

The Physical Vapor Deposition (PVD) process adds a layer of toughness to hardware exposed to environmental factors like direct sun and humidity. PVD finishes resist fading and discoloration, even in coastal areas. Satin Nickel, Brass, and Oil-Rubbed Bronze finishes are available with a PVD finish.

Physical Vapor Deposition has the highest grade corrosion resistance finish. Available on exterior door hardware.



Elevate Casement Narrow Frame window with Oil-Rubbed Bronze folding handle and lock lever



Elevate Casement windows in painted White with folding handles in Satin Nickel

DIVIDED LITES



SIMULATED DIVIDED LITE (SDL)

A simulated divided lite (SDL) is an energy-efficient way to create the look of authentic divided lites. SDL bars are permanently adhered to both sides of the glass. Spacer bars can be installed between the bars inside the glass, creating the look of individual panes.

- Available on Elevate products



GRILLES-BETWEEN-THE-GLASS (GBG)

Low-maintenance grilles offer the look of a divided lite pattern with the ease of cleaning just one pane of glass. Exterior colors match Ultrex® fiberglass exteriors, and a selection of interior colors match or complement interiors.

- Available on both Elevate and Essential products



SIMULATED CHECKRAIL

The simulated checkrail is the perfect solution when your home style calls for the look of a double hung window, but operation, egress, or performance demand another solution. Essentially, it gives a casement window the look of a double hung.

With custom placement anywhere on the window and paired with 7/8" divided lite bar patterns above and below, this option offers wonderful flexibility for creating a unique look that's perfect for your home. Available on Elevate Casement, Awning, and Glider windows and all Elevate doors.

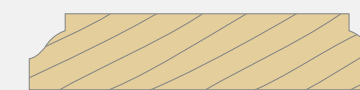
- Available on Elevate products

PATTERNS

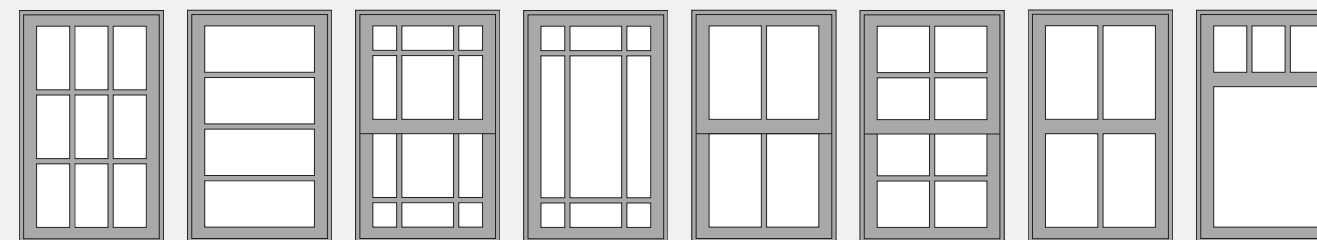
These illustrations offer a sampling of Simulated Divided Lite (SDL) patterns that can be selected on Elevate windows and doors. Enjoy exceptional design flexibility by combining standard 7/8" bars with the 2 1/32" Simulated Checkrail.



7/8"
(default width)



2 1/32"



GLASS

DUAL PANE VS. TRIPLE PANE



DUAL PANE

Our standard glazing is dual pane: two panes of glass with Low E coatings and insulated with argon gas. Compared to a single glass pane, dual pane glass cuts heat loss significantly because of the insulating space between the glass layers.

TRIPLE PANE: IS IT RIGHT FOR YOU?

While Marvin triple pane windows are engineered for long-lasting energy efficiency, not all windows are made the same. Simply having three panes of glass doesn't necessarily mean a triple pane window is more energy efficient. Glass coatings, the type of gas used in the spaces between the glass, the design of the window, the materials used, and how well it is installed all play a role in achieving the overall energy efficiency. Consider the energy efficiency of the entire window, not just the number of panes.

Visit marvin.com/energyratings to view detailed performance ratings for all Marvin products.



TRIPLE PANE

Triple Pane glazing provides three panes of glass with Low E coatings. Two glass spaces are insulated with argon gas between the panes.

A poorly designed or installed window, or a window made with inferior materials like vinyl, may not be energy efficient regardless of the number of panes of glass. Materials shrink and expand with cold/heat cycles, and seals can begin to fail. Once seals fail, the energy efficiency the window claimed when it was new becomes greatly reduced. Consider your home's unique needs before assuming that triple pane, or tripane, is always the best solution.

COATINGS & ENERGY EFFICIENCY

Low E coatings are a microscopically thin, virtually invisible metallic layer on the glass surface help manage the amount of heat either radiated through a window or reflected away from it. Marvin products are offered with a variety of Low E coating options for thermal performance best suited for your heating and cooling needs.

The national ENERGY STAR® program recognizes products that meet strict energy efficiency guidelines to suit climates in different areas of the country. No matter where you are located, we offer energy efficient solutions that meet or exceed ENERGY STAR guidelines.

Visit marvin.com/energy for more information.

LOW E1	Single layer of metallic coating, which reduces heat loss to the outside while allowing the highest levels of solar heat into a room. Generally used in Northern climates where heating is prioritized over cooling.
LOW E2	Double layer of metallic coating. Provides year-round performance and comfort. Works well in most geographic regions and climates where a mix of heating and cooling is required.
LOW E3	Triple layer of metallic coating provides the most protection against solar heat gain (warmth from the sun). Most commonly used in climates where sun exposure is intense and cooling is a priority.
LOW ERS	A high-performance insulating glass option that features a Low E coating on the Room-Side glass together with a coating of Low E2 or Low E3 on the second glass surface. This option is designed to reflect radiant heat back into the room. It is not recommended for some northern zones as condensation is more likely to occur.

DECORATIVE AND SPECIALTY GLASS OPTIONS

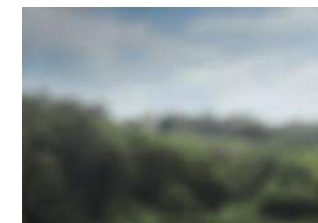
Glass goes beyond energy efficiency. Decorative and privacy glass, and even specialty glass that provides additional sound reduction, can be paired with thermal performance options for a window or door that is perfect for your home.

DECORATIVE GLASS

Offered with your choice of Low E coatings for energy efficiency and your own unique style.



BRONZE TINT



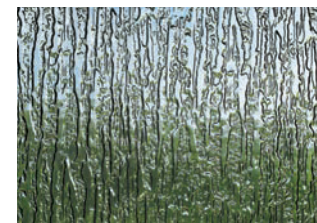
GRAY TINT



GREEN TINT



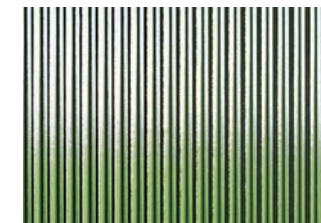
GLUE CHIP



RAIN



REEDED



NARROW REED



OBSCURE



FROST

SPECIALTY GLASS

Our specialty glass options include glazing for unique project requirements like sound reduction, high altitudes, and California fire zones. We also offer laminated glass in Elevate products designed specifically for hurricane zones.

GLOSSARY

ACTIVE PANEL

The operating portion of a door that holds the glass and is separate from the frame.

ASSEMBLY

Single units mullied (attached) together to create one larger grouping.

AWNING

A top-hinged window that swings out from the bottom. Available with crank out hardware or as a push out model.

BAY WINDOWS

A series of windows installed in an angled “bay” formation with a head and seat board. Typically two smaller operating units flank a larger fixed center window.

BOW WINDOWS

A series of adjoining window units that are configured in a gradual arc.

CASEMENT

A side-hinged window that swings inward or outward from the left or right. Available with crank out hardware or as a push out model.

CHECK RAIL

The horizontal portion of a double hung window where the top and bottom sashes meet. Simulated check rails use divided lite bars to simulate the look of a double hung window in a casement or glider.

CLAD

Interior window and door parts (typically wood) covered with a more weather-resistant exterior-facing material. Often extruded aluminum wood windows.

CONDENSATION

Moisture that forms on a surface. This could be a result of a difference in temperature between the surface and the air, or high humidity in the home.

DAYLIGHT OPENING (DLO)

The area of the window or door where light passes through; the width and the height of the visible glass.

DIRECT GLAZE

Stationary or fixed window with no sash for maximum daylight opening. Glass is glazed directly into the frame.

DOUBLE HUNG

Double hung windows have two movable sashes which are hung in the window frame and slide/operate vertically.

FRAME

The stationary portion of a window that surrounds either the glass (direct glaze) or the sash (operating or stationary).

FRENCH DOOR

A style of patio door featuring the traditional styling of taller top and bottom rails. Available in a variety of configurations (inswing, outswing, sliding) with multiple panels. Swinging doors available with optional arch tops.

GLIDER

Horizontal operating window in which sash glide left or right. Available in dual-sash configurations, triple-sash with a larger center picture unit, or four sashes with center sash that slide out to the side to reveal a wide pass-through opening.

GRILLES

Removable interior wood bars or muntins made to simulate authentic divided lites. Grilles are often rectangular or diamond shaped and are easily removed for cleaning purposes.

GRILLES BETWEEN THE GLASS (GBG)

Dividers placed between the panes of glass to simulate authentic divided lites. GBGs facilitate window cleaning with no bars on the exterior or interior surface of the glass.

HARDWARE

The locks, crank handles, and hinges on windows and doors used to operate and secure them.

HEAD JAMB

The horizontal piece forming the top of the frame on a window or door.

INACTIVE PANEL

Fixed or non-operating portion of the door that holds the glass and is separate from the frame.

INSWING FRENCH DOOR

A French-style patio door with panels that swing in to the interior of the home.

LIFT AND SLIDE

A large sliding door with proprietary hardware that lifts the panels to allow them to effortlessly slide open or closed. Available in pocket or stacked configurations. Pocket panels slide into a concealed wall pocket, while stacked panels slide and stack at either one or both sides of the door frame.

MULL/MULLING

The actual components used to attach two or more window and/or door units together to form an assembly. The process of joining multiple units to each other.

MUNTIN

Bars that form the decorative grille pattern on a window or door.

OPERATOR

An operating sash, panel, or unit in a window or door.

OUTSWING FRENCH DOOR

A French style patio door with panels that swing out to the exterior of the home.

PANEL

Stationary or operating portion of the door that holds the glass and is separate from the frame.

PICTURE WINDOW

A fixed/stationary window to align with the profiles of operating windows. Sash is typically non-operable and attached directly to the frame. Often available in significantly larger sizes than accompanying operating window. Venting picture units are available.

RAILS

The cross or horizontal members of the framework of a sash, door, screen, or other panel assembly.

ROUGH OPENING

The opening in the wall where a window or door unit is to be installed. Openings are larger than the size of the unit to allow room for insulation.

ROUND TOP

Window with an arched or semicircle top, often placed above a rectangular window or door, thus forming the round top appearance. Available as fixed or operating units.

SASH

The operating and/or stationary portion of the window that holds the glass and is separate from the frame.

SCREENS

A close-mesh woven material of metal or fiberglass attached to an aluminum or wood surround. Screens inhibit entry of insects, yet allow for light, air, and unobstructed views.

SIDE JAMB

The left and right vertical pieces forming the frame on a window or door.

SILL

The horizontal piece forming the bottom of the frame on a window or door, resting on the foundation or the bottom of the rough opening, and supporting the frame.

SIMULATED DIVIDED LITE (SDL)

Muntins permanently adhered to the interior and exterior of a large piece of glass to simulate the appearance of individual lites.

SINGLE HUNG

A window very similar to a double hung window, except that the top sash is stationary or non-operable.

SLIDING FRENCH DOOR

A French style patio door available in two-, three-, or four-panel configurations. Left, right, and/or center panels operate when grouped in three. When grouped in four, two center panels slide out to the side to reveal a wide walk-through center opening.

SLIDING PATIO DOOR

A sliding door featuring narrow stiles and rails for more contemporary styling and increased daylight opening. Available in configurations similar to the Sliding French door.

STATIONARY

A non-operating sash, panel, or unit in a window or door.

STILES

The upright or vertical members of the framework of a sash, door, screen, or other panel assembly.

ULTREX®

A proprietary pultruded fiberglass material made of resin and glass fibers with an integrated patented finish. Available exclusively in products from Marvin.

UNIT

One single window or door.

VENTING PICTURE

An expansive picture window designed to open evenly on all sides, allowing for passive air exchange with minimal disruption of exterior spaces. Hidden screen system allows for fully unobstructed views.

WEATHER STRIP

A strip of resilient material designed to seal the sash and frame members in order to reduce air and water infiltration.

CONTACT

QUESTIONS OR CONCERNS?

For questions about your window or doors, including defects, contact your dealer. For installation issues such as leaks around your window, issues with caulking, trim, or other parts surrounding the window, contact your installer.

Marvin U.S. Sales and Service:
1-888-537-7828



Ultimate Multi-Slide Door

At Marvin, our focus is on creating long-lasting, energy-efficient windows and doors that are just right for your unique home.

We understand and appreciate the investment you are making, and we work hard to ensure that replacing your windows and doors with us is a rewarding experience.

Thank you for considering Marvin for your project. We look forward to working together.