

Series 8500 / AC85

Heavy Commercial / Acoustical
Projected Aluminum Windows

The Marriott logo is displayed in red, three-dimensional lettering on the upper right portion of a white building facade. The building features a grid of windows with dark frames and light-colored curtains. The sky is a clear, bright blue.The CRYSTAL logo is rendered in a bold, blue, sans-serif font with a registered trademark symbol. Below it, the text 'WINDOW & DOOR SYSTEMS, LTD.' and the website 'WWW.CRYSTALWINDOWS.COM' are written in a smaller, blue, sans-serif font. The background of this section is a solid orange color.

CRYSTAL[®]
WINDOW & DOOR SYSTEMS, LTD.
WWW.CRYSTALWINDOWS.COM

8500/ 8600 / AC85 ARCHITECTURAL-RATED THERMAL-BROKEN WINDOW

PRODUCT FEATURES

- 2-5/8" Frame Depth
- 1" Insulated Glass Unit
- Double Weatherstripping
- Two rows of 1/4" bulb used on sash perimeter.
- Four-Bar Stainless Steel Friction Hinges (8500 Only)
- Able to keep sash in open position.
- Single Operating Stainless Steel Multi-Point Locks (8500 Only)
- Integral Handle Rail (8500 Only)
- Fixed - 8510, Project Out - 8520, Project In - 8530, Inswing Casement - 8580
- AAMA 2604 Powder Coat Finish
- Wall thickness 0.08"



Series 8500
Aluminum Thermal-Break
Casement Windows

AVAILABLE:

- Series AC85 - The Ultimate Acoustical Projected Window Line
- Series 8600 - 3 1/4" Frame Depth
- 1 1/4" Insulated Glass Unit Thickness
- Enhanced insulation & sound reduction.
- Low-E Coating & Argon - Enhances energy efficiency.
- Between-the-Glass or Exterior Applied Grids
- Custom Colors and Finishes
- 1 1/2" Casement Flange
- Continuous Master Frame Design - Up to 3-lites.
- Receptor System & Subsill
- Panning & Interior Trim
- Custom Accessories Available
- Insect Screen
- Nailing Fin for New Construction

Available
Performance up to
STC 57 / OITC 46

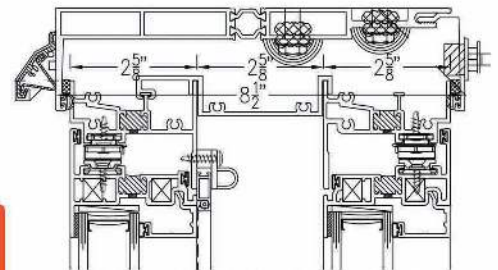


Illustration shown with optional receptor w/ integral trickle-vent.
Contact your Crystal rep for more details.

Product	8500	8510	8520/8530	8580
Style	Outswing	Fixed	Project-Out/In	Inswing
AAMA Rating	AW-PG100	AW-PG85	AW-PG80/100	AW100
Water (psf)	12	12	12	12
Uniform Load (psf)	150	127	120/150	150

Crystal Window & Door Systems, Ltd.

NYC, NY (HQ) 31-10 Whitestone Expressway, Flushing, NY 11354 Tel: 800.472.9988/718.961.7300 Fax: 718.460.4594
 SCRANTON, PA 204 Franklin Valley Rd., Dalton, PA 18414 Tel: 570.276.8000 Fax: 570.563.5313
 CLEVELAND, OH 29299 Clemens Rd. 1-B, Westlake, OH 44145 Tel: 440.871.8694 Fax: 440.871.8690
 ST. LOUIS, MO 300 Axminister Dr., Fenton, MO 63026 Tel: 636.305.7880 Fax: 636.305.7881
 CHICAGO, IL 1300 W. 35th st. Chicago, IL 60609 Tel: 773.376.6688/888.280.3288 Fax: 773.376.6868
 RIVERSIDE, CA 1850 Atlanta Ave., Riverside, CA 92507 Tel: 951.779.9300 Fax: 951.779.6300
 DALLAS, TX 454 W. Mockingbird Ln, Dallas, TX Tel: 469.248.3012 Fax: 469.248.2978

Follow us on:



Crystal Windows Affiliations: AIA WDMA



CRYSTAL[®]
WINDOW & DOOR SYSTEMS, LTD.
WWW.CRYSTALWINDOWS.COM



MANUFACTURER RESERVES THE RIGHT TO CHANGE PRODUCT DESIGN, SPECIFICATIONS, DETAILS AND PRICING AT ANY TIME WITHOUT PRICE NOTIFICATION.